

MFH, Katharinenhof, Pfäffikon  
Pfäffikon SZ

---

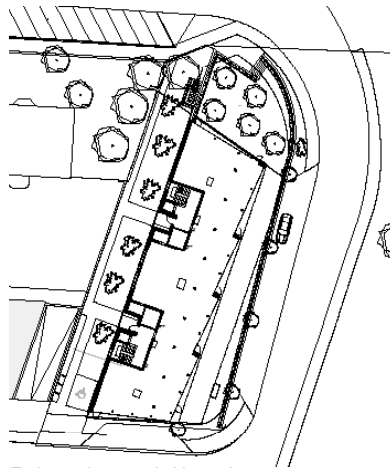
**Bauherr**  
Privat

---

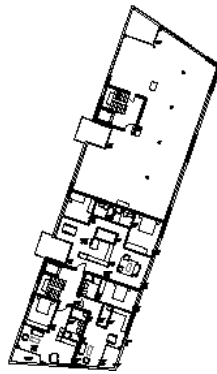
**Nutzung**  
Neubau  
15 Wohnungen mit  
Gewerbe

---

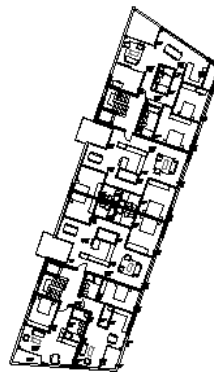
**Termine**  
2013 - 2015 Planung, Realisation



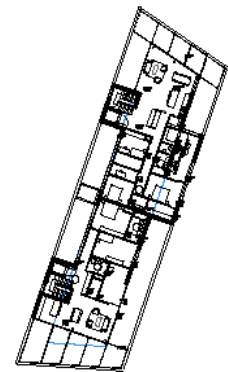
Erdgeschoss mit Umgebung



1. Obergeschoss



2. - 3. Obergeschoss



Attikageschoss

